

The Early Childhood Education Report 2020

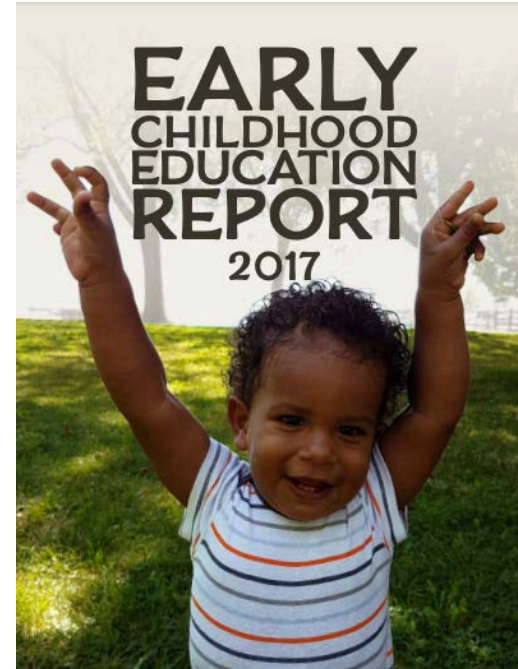
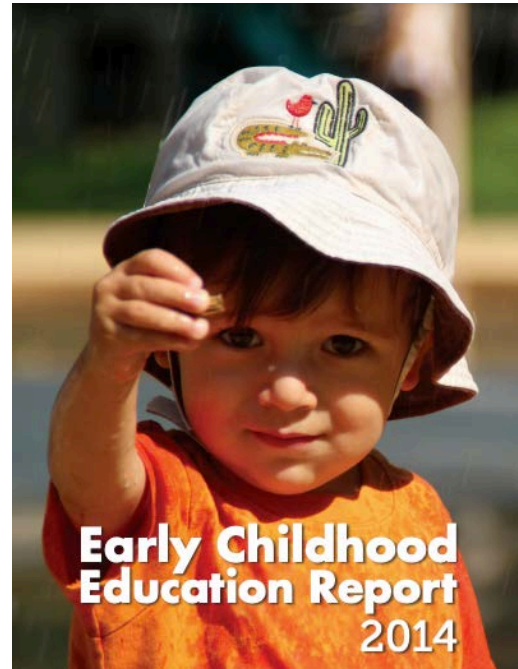
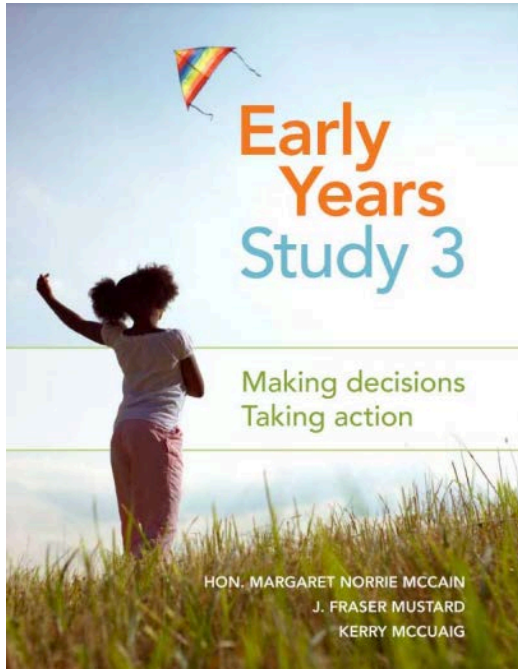
Trends

Atkinson Centre for Society and Child Development
OISE | University of Toronto

Authors: Emis Akbari, Kerry McCuaig, Daniel Foster



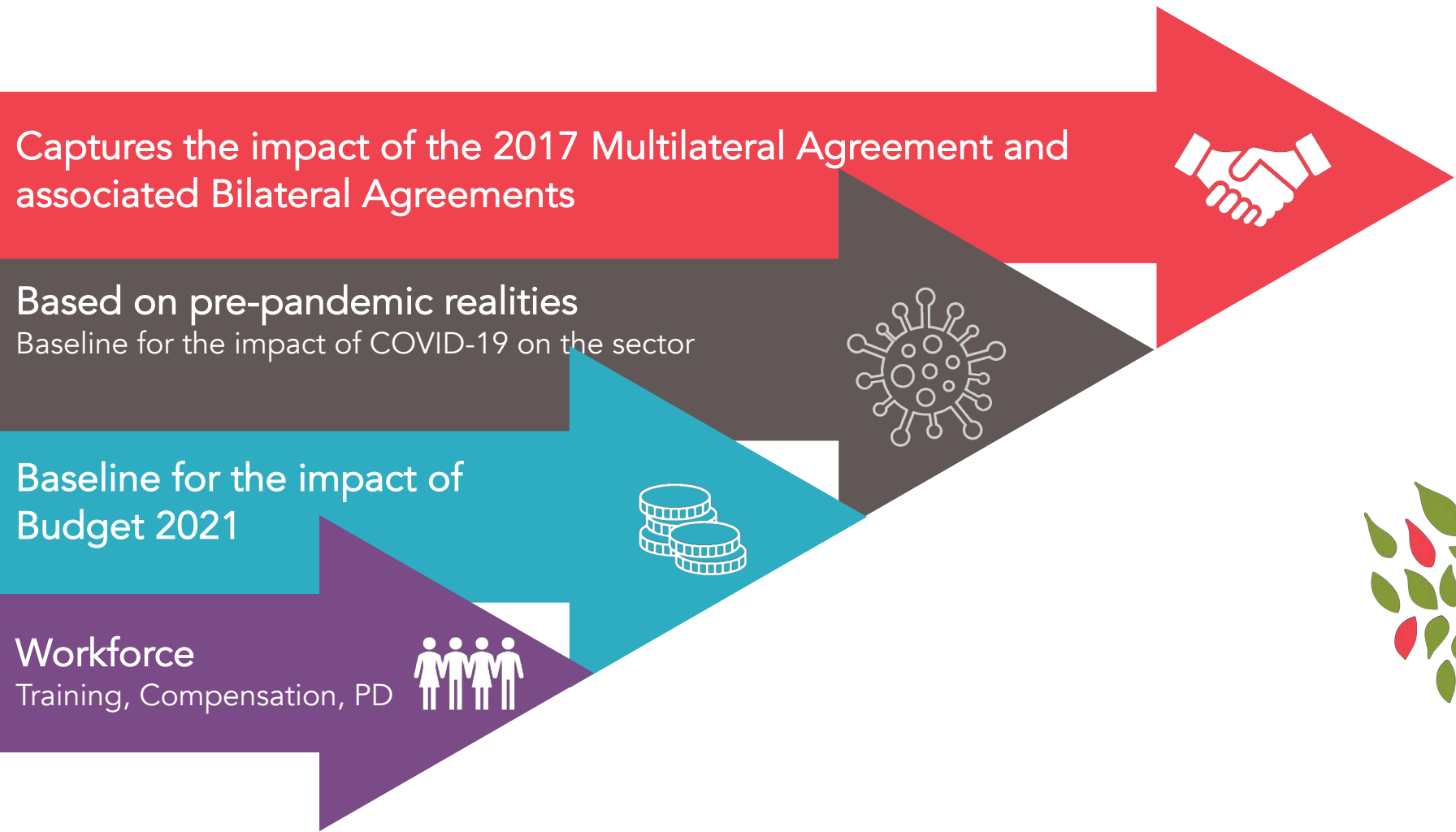
The [Early Childhood Education Report 2020](#) is the 4th assessment of provincial and territorial frameworks for early childhood education and care services (ECEC) in Canada.



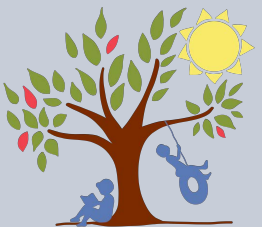
EARLY CHILDHOOD EDUCATION REPORT BENCHMARKS OF QUALITY

GOVERNANCE		FUNDING		ACCESS		LEARNING ENVIRONMENT		ACCOUNTABILITY		5 CATEGORIES
	PTS		PTS		PTS		PTS		PTS	
ECEC under common department/ministry	.5	At least 2/3 of child care funding goes to program operations	1	Full-day Kindergarten	1	ECEC curriculum framework	.25	Current and posted annual progress reports	1	21 BENCHMARKS
ECEC supervisory unit	.5	Managed salary and fee scale in licensed child care	1	50% of 2- to 4-year-olds regularly attend an ECEC program	1	ECEC curriculum framework use is mandatory	.25	Facilities standards for ECEC programs include Kindergarten	1	
Common ECEC policy framework	1	At least 3% of overall budget devoted to ECEC	1	Funding conditional on including children with special needs	1	Alignment of ECEC programs with Kindergarten	.5	Population measures for preschool collected and reported	1	
Common local authority for ECEC administration and delivery	1		↓		↓	At least 2/3 of staff in programs for 2- to 4-year-olds are qualified	.5		↓	
	↓					Kindergarten educators require ECEC qualifications	.5			
						Salaries of ECEs at least 2/3 of teachers	.5			
						ECE professional recognition required	.25			
						ECE professional development required	.25			
							↓			
	3									
	+									
			3							
			+							
					3					
					+					
							3			
							+			
								3		
									15 POINTS	

The ECER 2020



Access



PERCENT OF CHILDREN ATTENDING SCHOOL-OPERATED EARLY CHILDHOOD PROGRAMS

Province/ Territory	4-year-old Population	Percent Attending 4-year-old PreK		5-year-old Population	Percent Attending 5-year-old Kindergarten	
		Full Day Prekindergarten	Half Day Prekindergarten		Full day Kindergarten	Half day Kindergarten
NL ^a				4,690	97%	
PE ^a				1,616	94%	
NS ^b	8,850	52%		8,776	99%	
NB				7,333	100%	
QC ^c	90,703	10%		91,893	96%	
ON	147,823	87%		149,359	90%	
MB	17,566		15.3%	17,758		86%
SK	31,295 ^d		16%	15,720		91%
AB				54,999		65%
BC				47,633	98%	
NU				891	9%	81%
NT	629	88%		606	98%	
YT ^e	472		14%	487	89%	

a NL and PE's plans for Prekindergarten were put on hold due to pandemic

b NS Pre-Primary enrolment was 75% in 2021

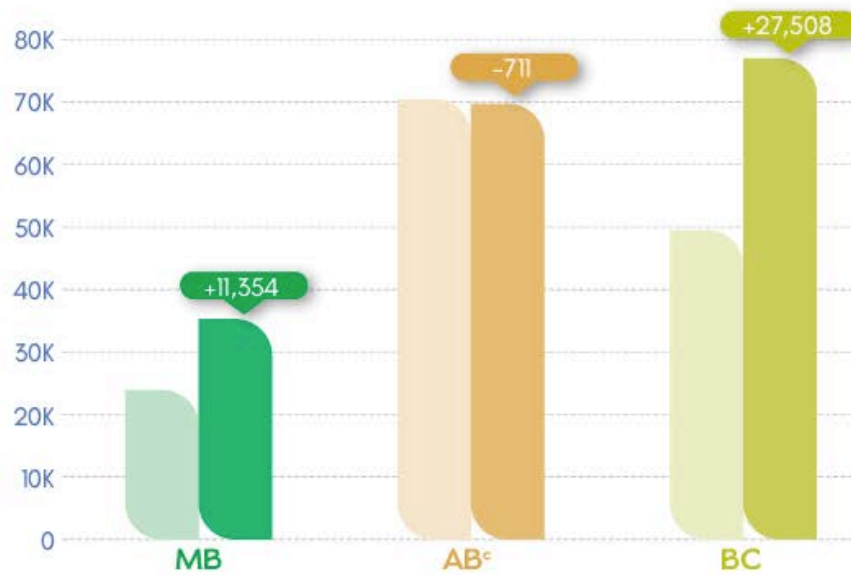
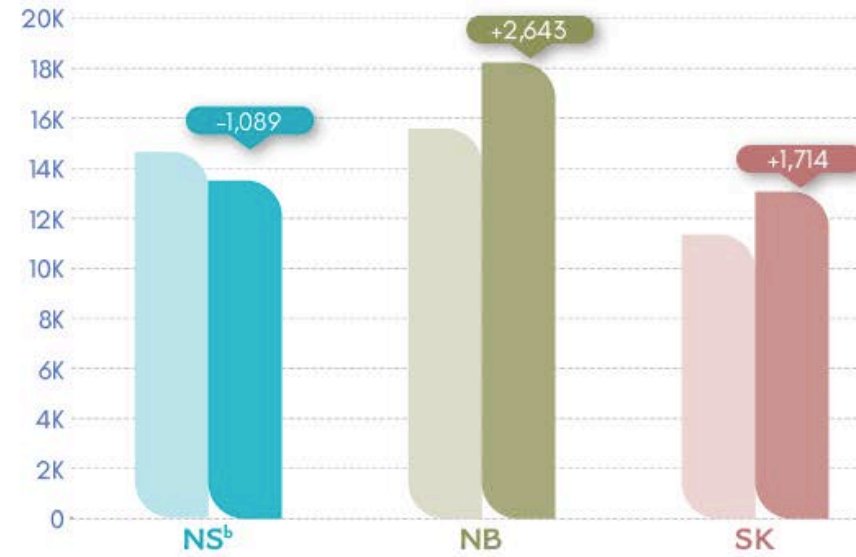
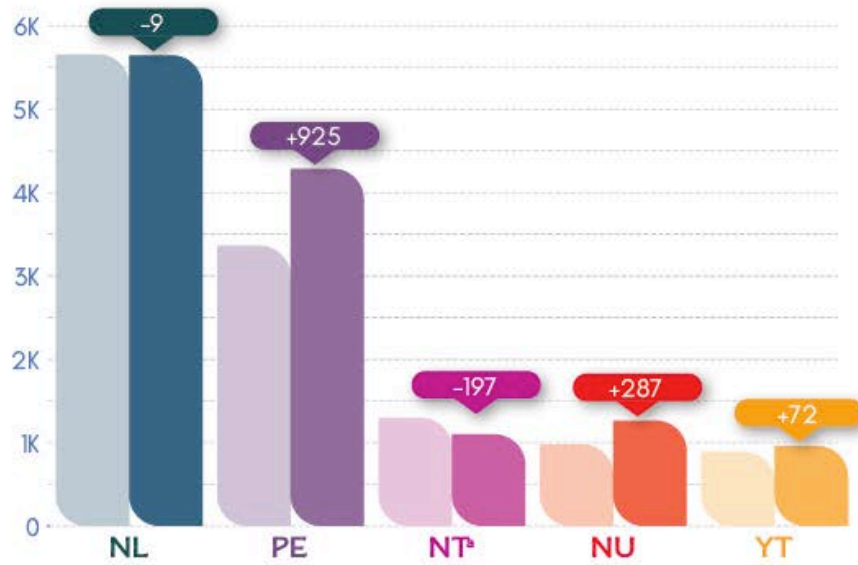
c QC committed to full-day Prekindergarten by 2023

d SK population and Prekindergarten enrolment figures include 3- and 4-year-old children

e YT to begin full-day Early Kindergarten for 4-year-old children in 2021 school year.



CHANGE IN THE NUMBER OF CHILD CARE SPACES (0 TO 5 YEARS) BY PROVINCE/TERRITORY 2017 • 2020



Includes centre-based, family and licensed child care for Kindergarten-age children.

a NT transfer of 4-year-olds into Junior Kindergarten

b NS transfer of 4-year-olds into pre-primary programs

c AB does not include children 2.8 to <5 years old enrolled in ECS programs provided under Alberta Education.



PERCENT OF 2- TO 4-YEAR-OLDS REGULARLY ATTENDING A GROUP EARLY CHILDHOOD PROGRAM BY PROVINCE/TERRITORY

2017 • 2020



Numbers do not include children attending family day care.
 SK 2020 does not include children attending private/unregulated preschool.



JURISDICTIONS WHERE PUBLIC FUNDING FOR CHILD CARE IS CONDITIONAL ON INCLUDING CHILDREN WITH SPECIAL NEEDS



01

PRINCE EDWARD ISLAND

Early Years Centres only

02

MANITOBA

In all publicly funded child care programs

03

ALBERTA

Early Childhood Services programs only

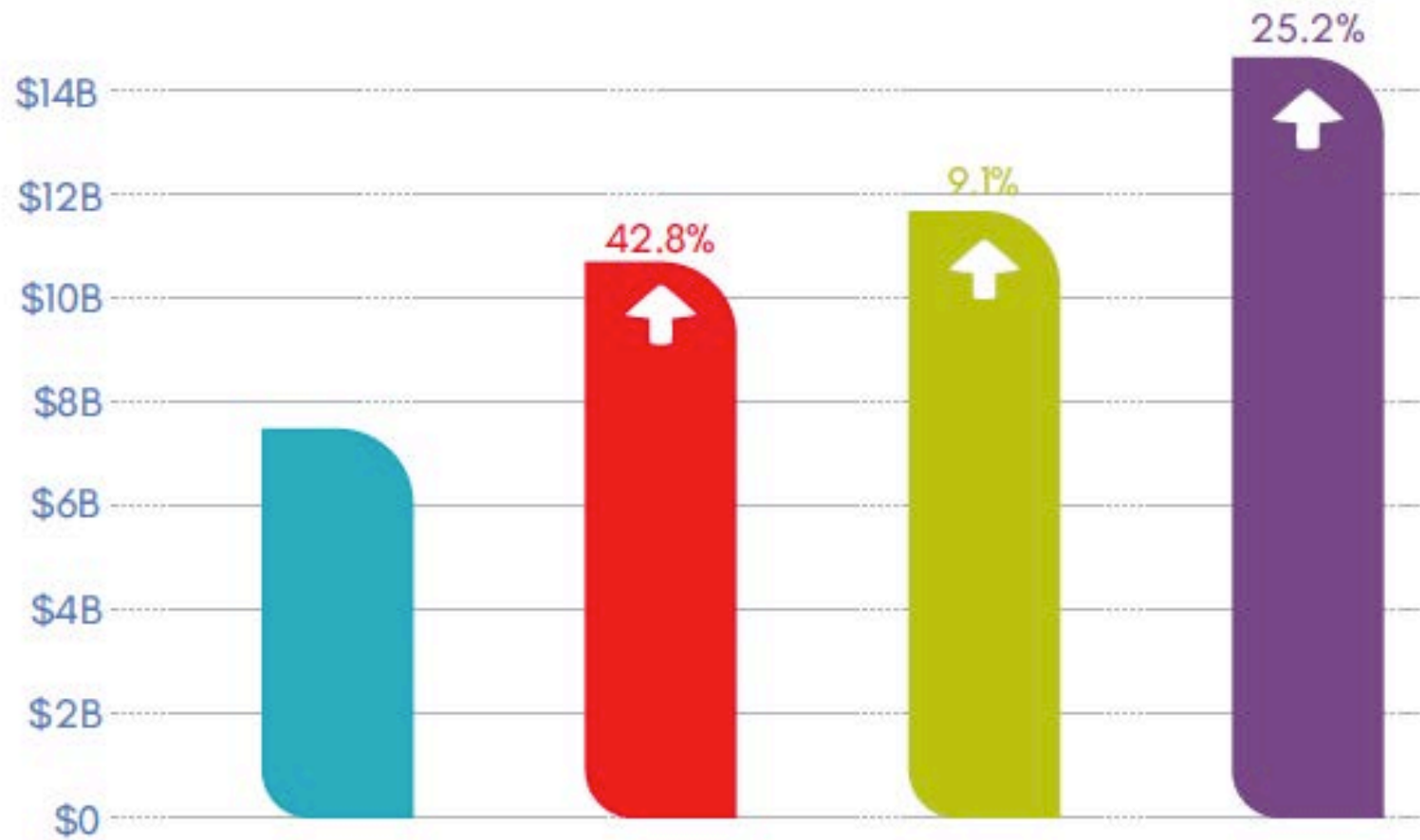


Funding



CHANGE IN TOTAL ECEC SPENDING

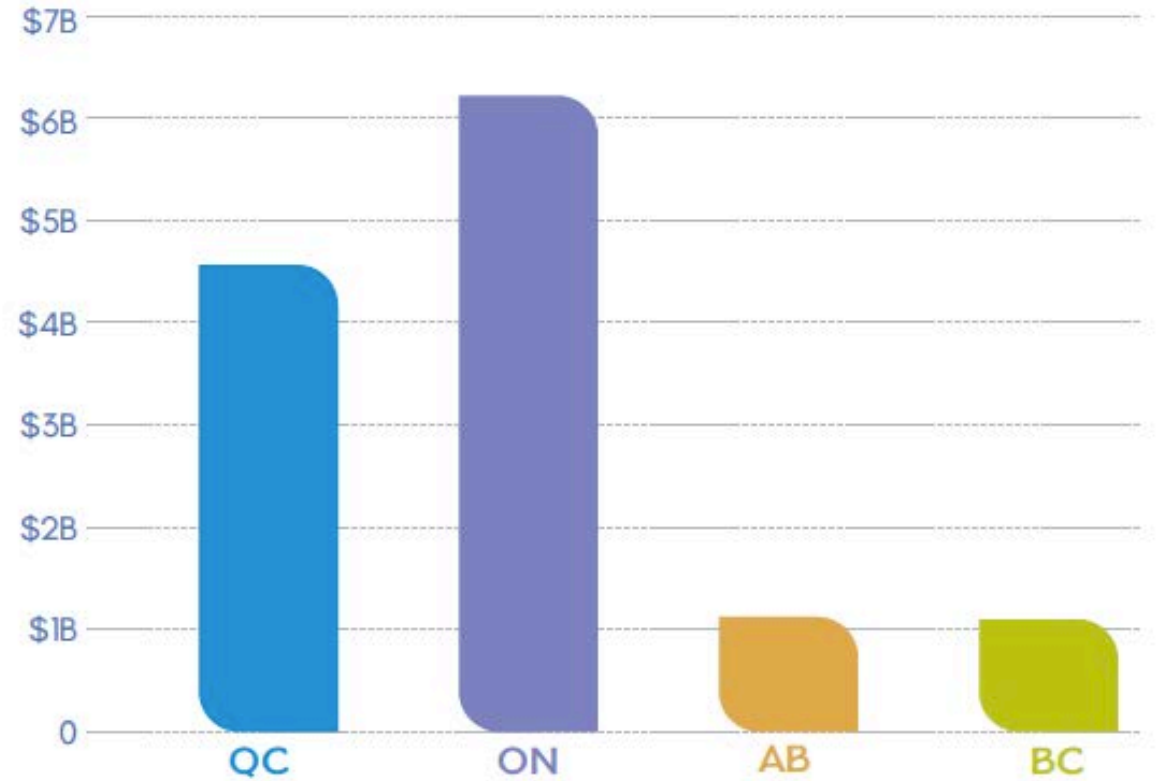
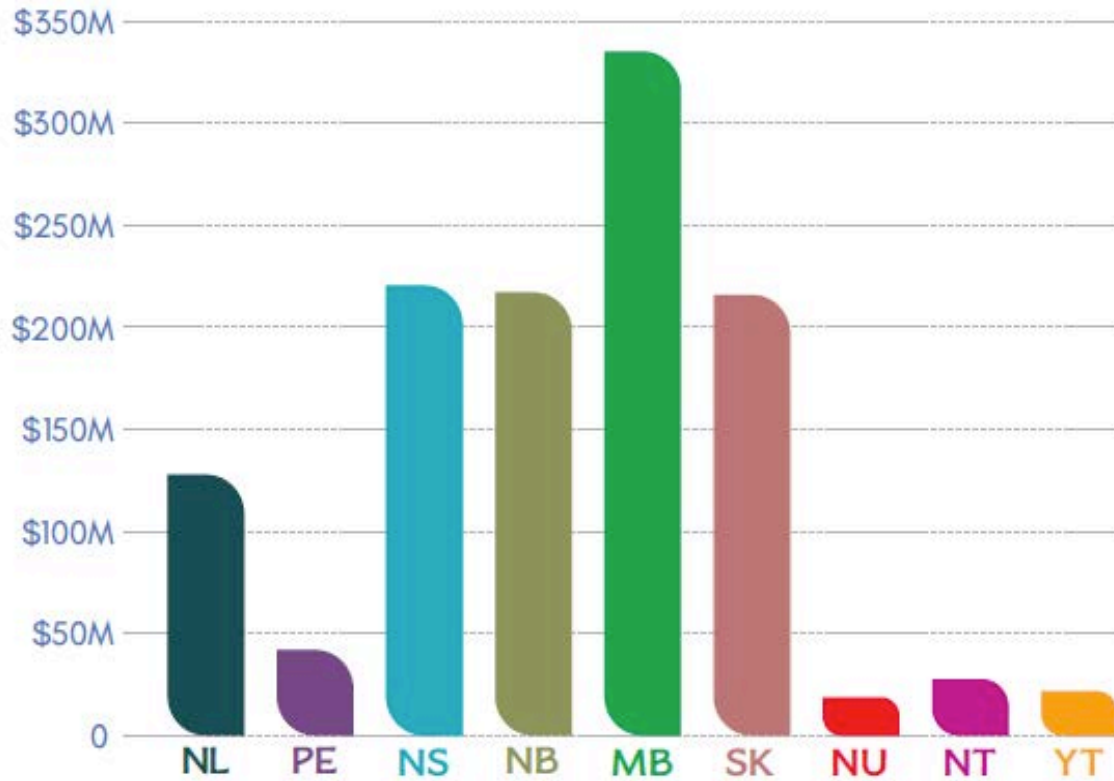
2011 • 2014 • 2017 • 2020



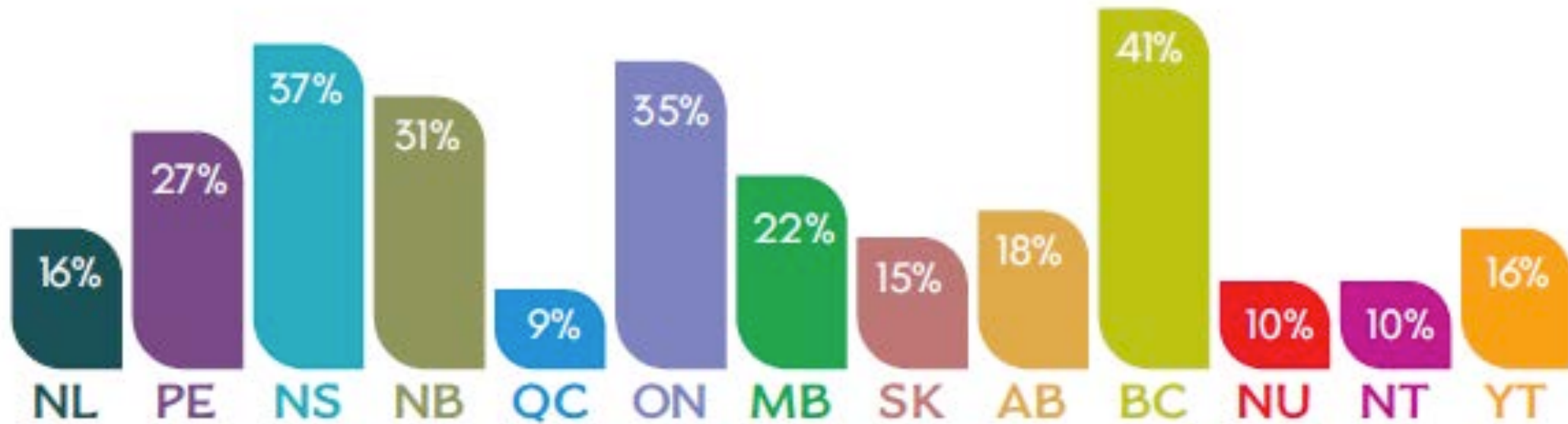
Percent reflects change in spending from previous ECER edition.



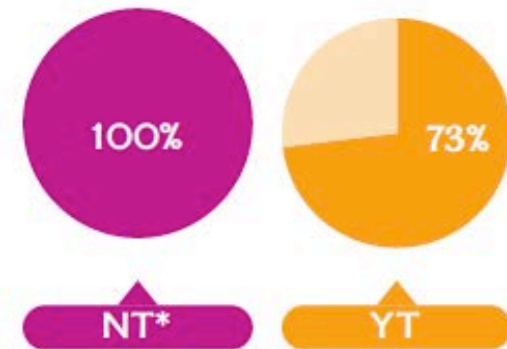
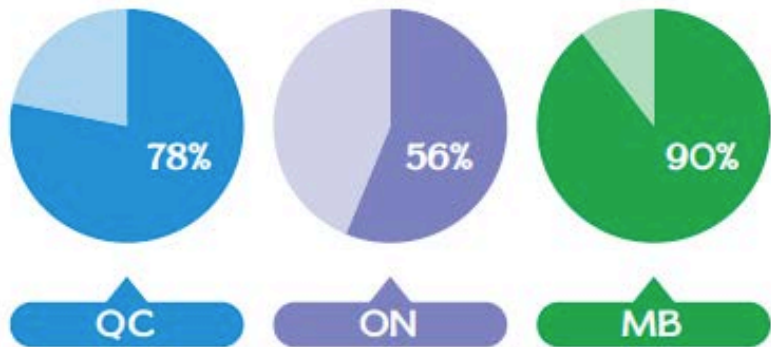
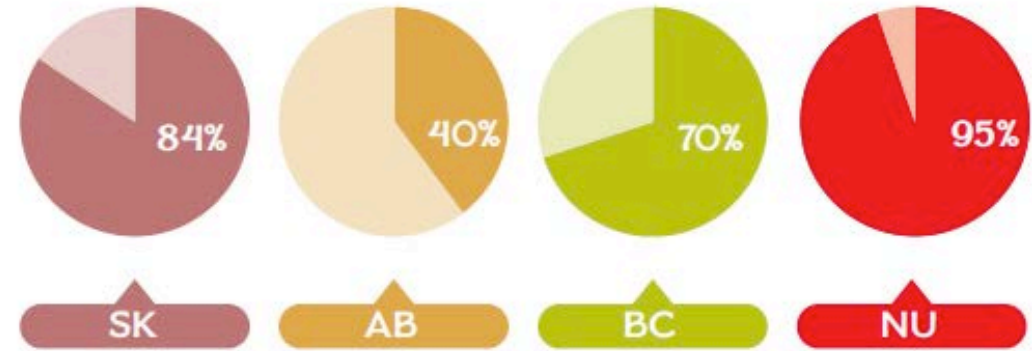
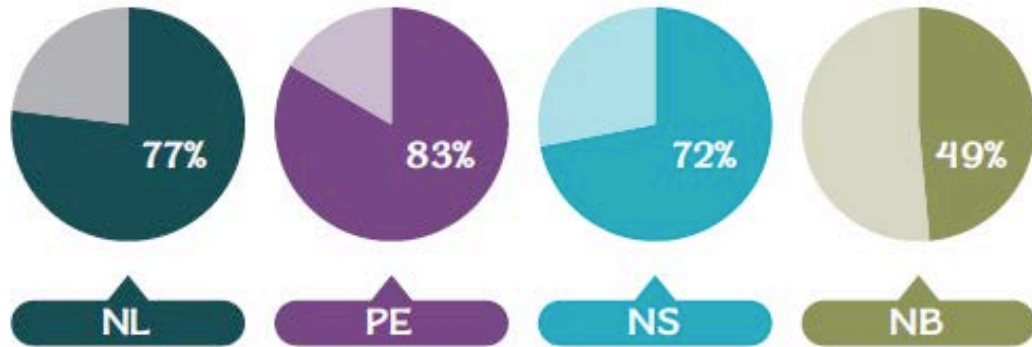
ECE SPENDING BY PROVINCE/TERRITORY (2020)



PERCENT INCREASE IN ECEC SPENDING BY PROVINCE/ TERRITORY FROM 2017 TO 2020



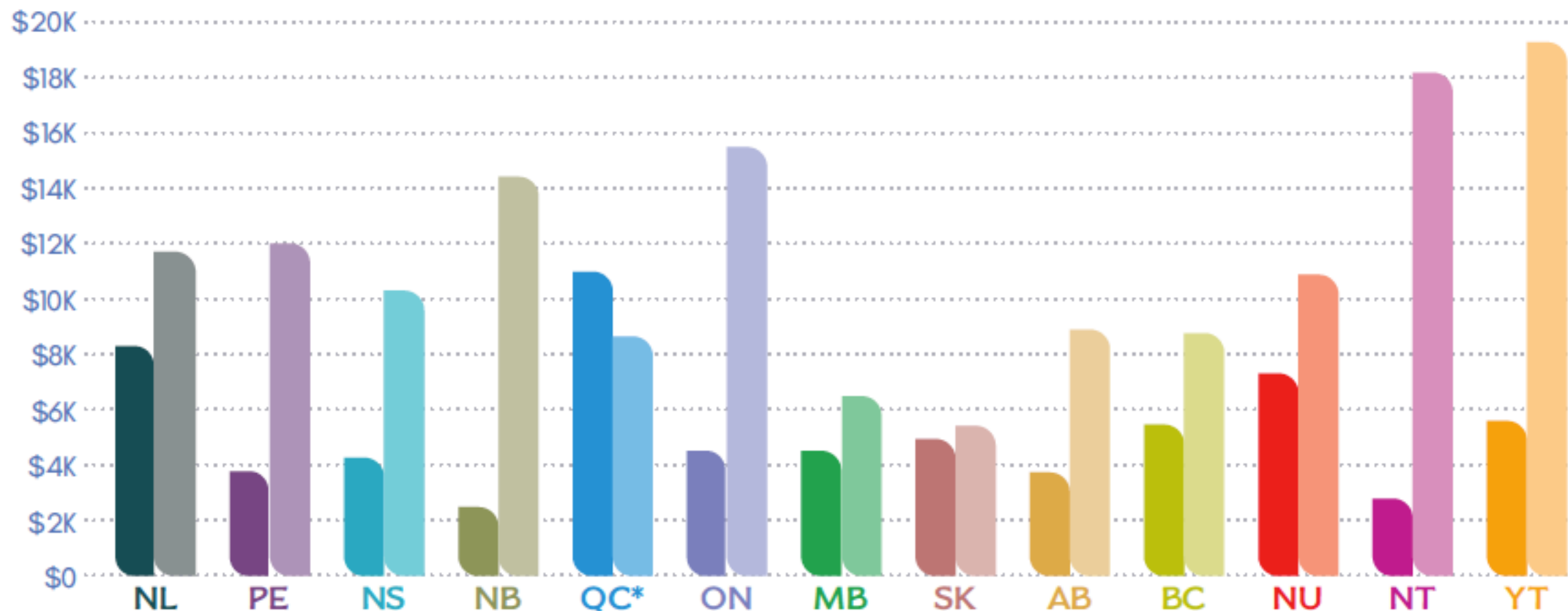
LICENSED CHILD CARE PROGRAM FUNDING VERSUS FEE SUBSIDY SPENDING



*All child care funding in NT goes to programming.



OPERATING EXPENDITURES PER CHILD CARE SPACE AND PER CHILD IN SCHOOL PROGRAMS



Calculation based on most recent available enrolment figures.

*QC does not include school-age child care. Funding only reflects spending on spaces for children 0 to <5.

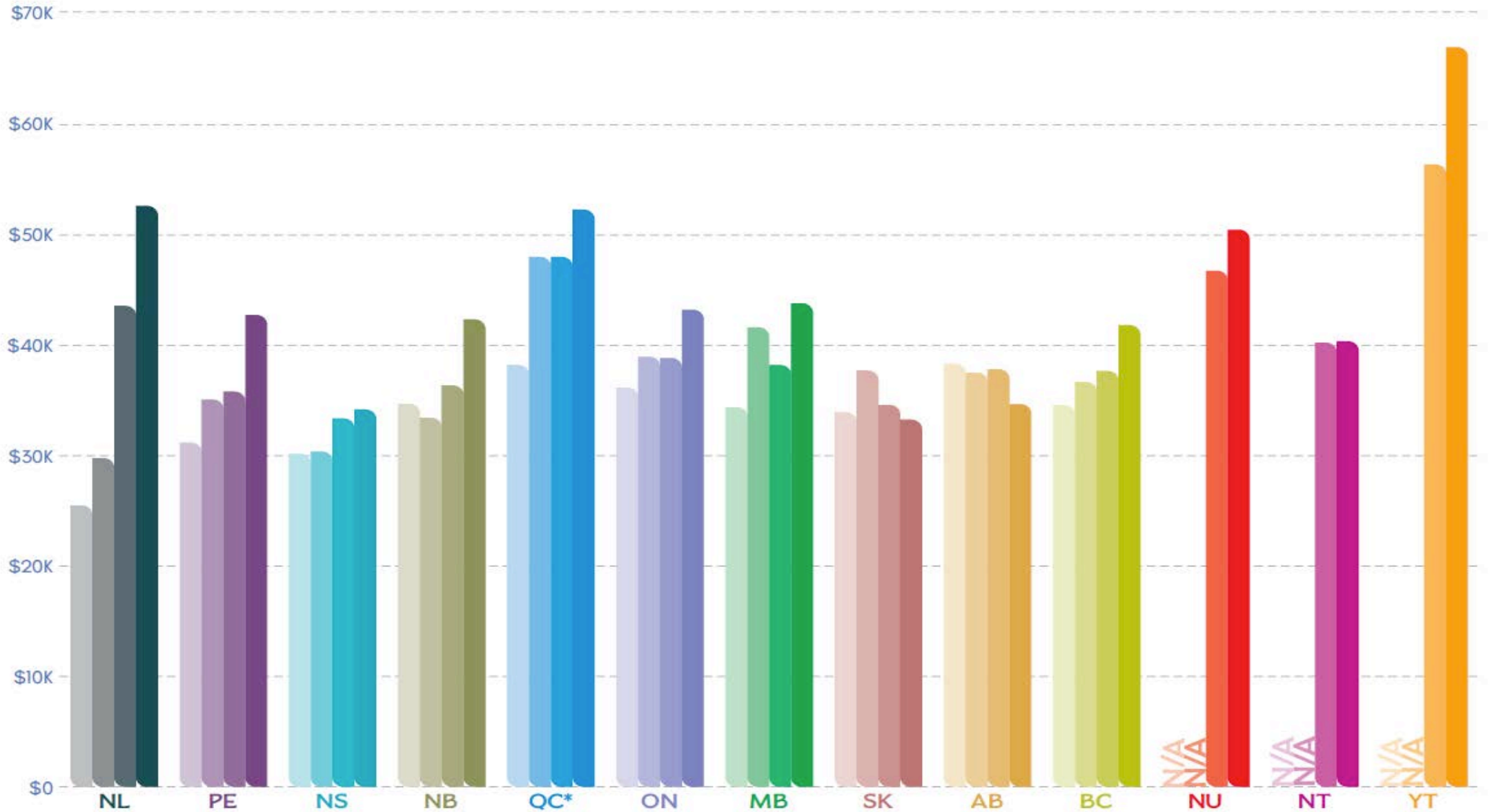


Workforce



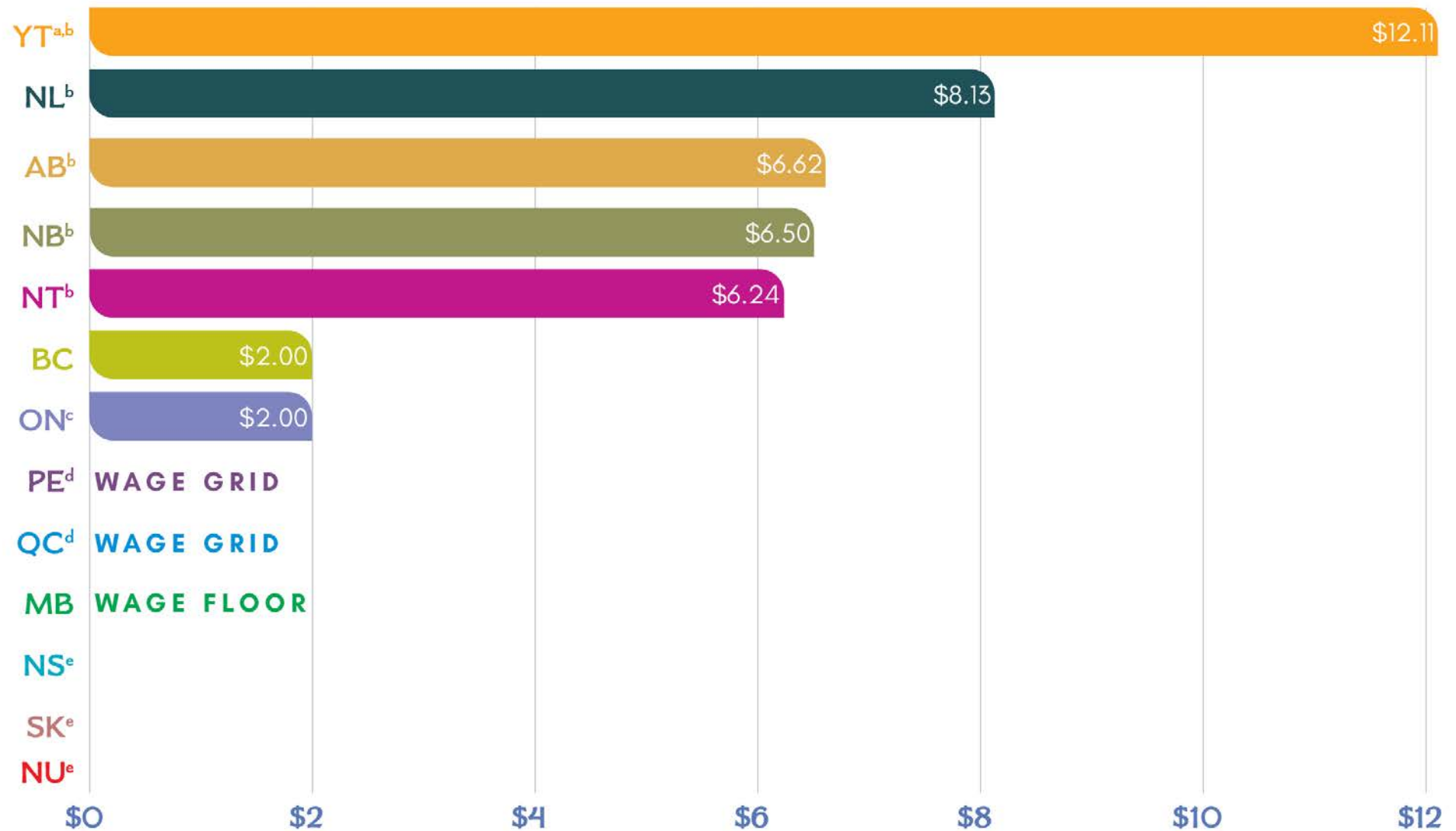
CHANGE IN ECE SALARIES

2011 • 2014 • 2017 • 2020



Reflects top salaries for qualified ECEs.

MAXIMUM HOURLY WAGE SUPPLEMENT FOR EARLY CHILDHOOD EDUCATORS



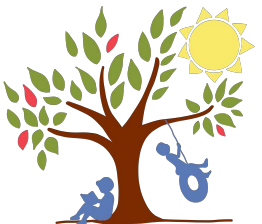
a In April 2021, YT increased its maximum wage enhancement to \$17.11 per hour

b The amount of the wage enhancement reflects the qualification level of the educator

c Educators earning more than \$27.47 per hour do not receive the wage enhancement

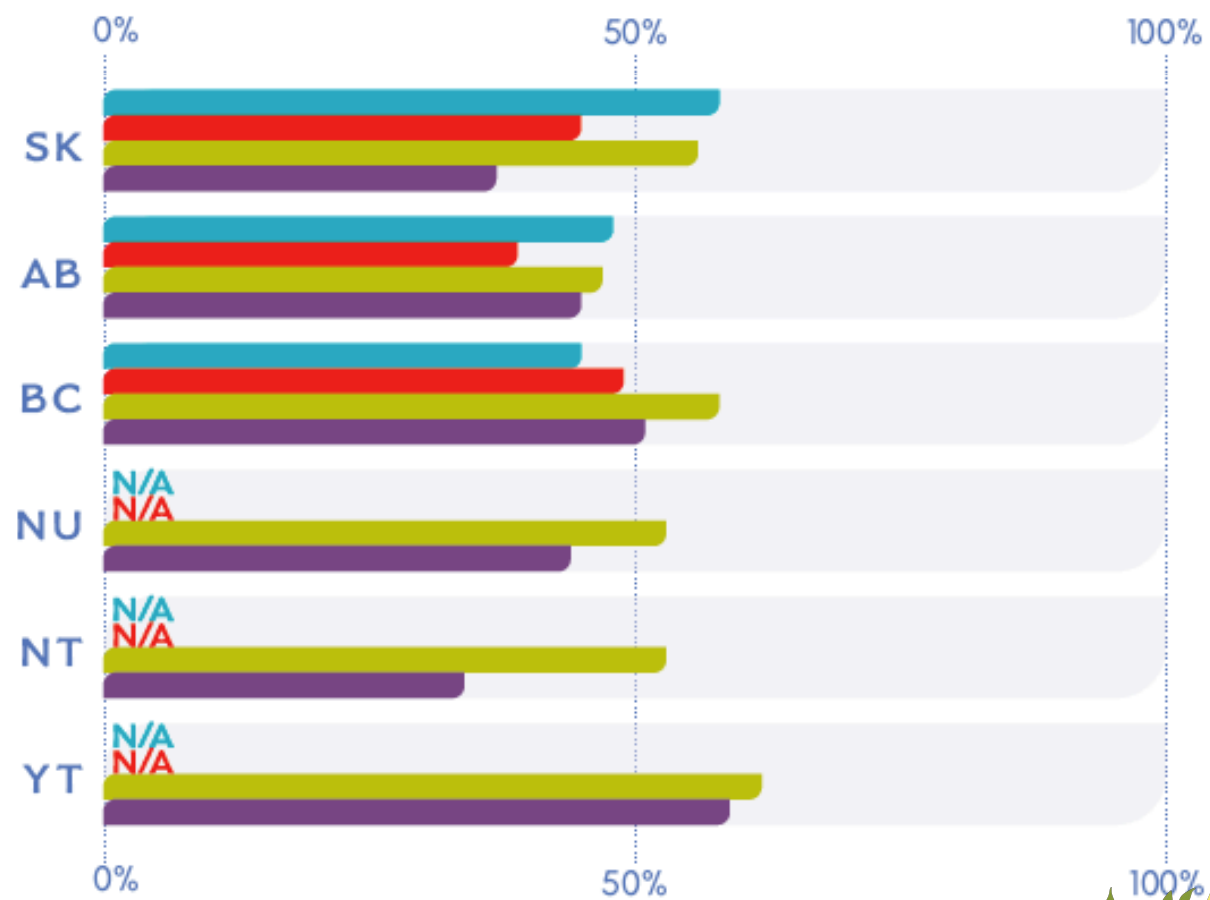
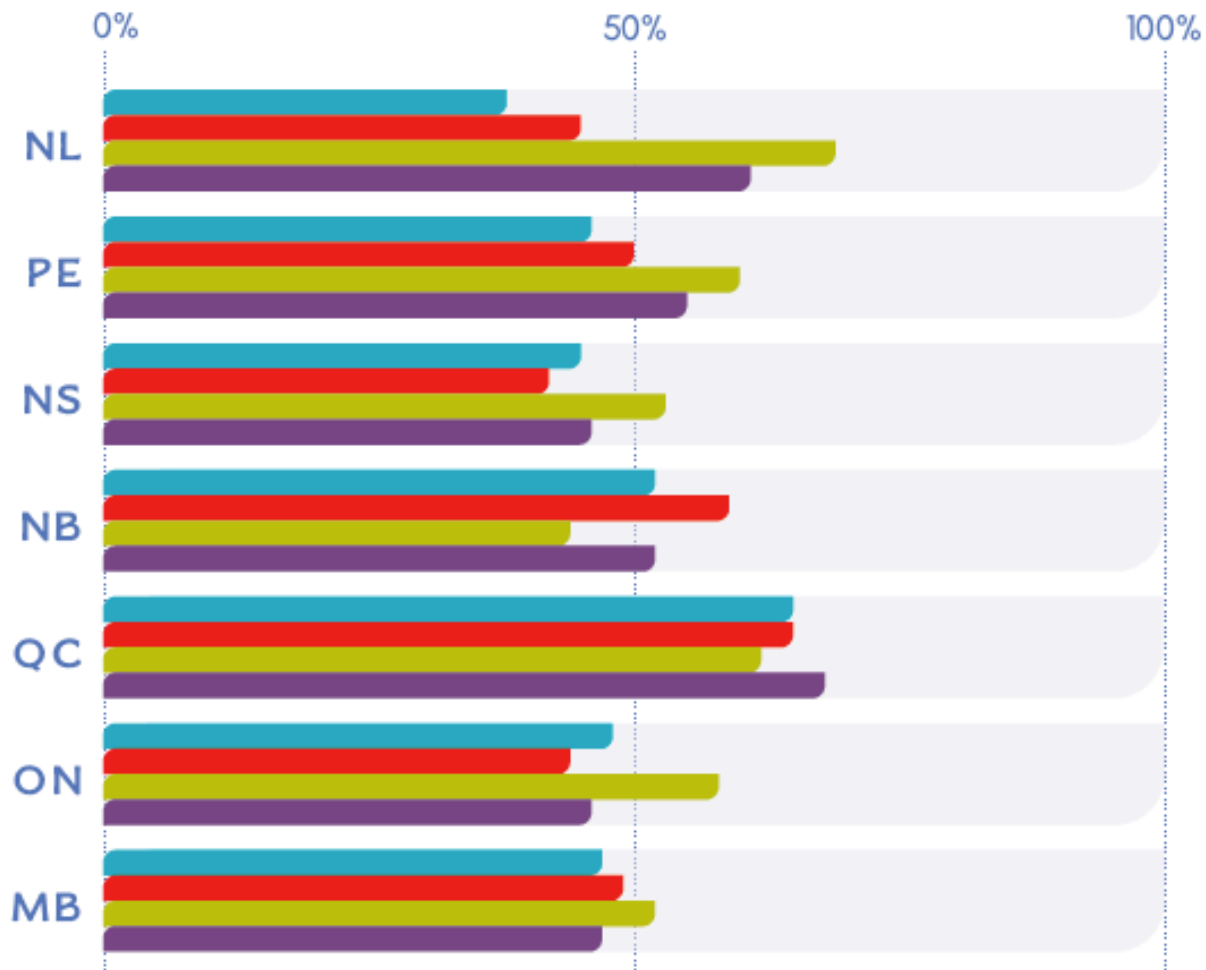
d Wage grids are in EYCs (PE) and CPEs (QC) only

e Wage support may be included within operating grants



ECE SALARIES AS A PERCENT OF TEACHER SALARIES

2011 • 2014 • 2017 • 2020



RATIO OF QUALIFIED ECES TO UNQUALIFIED STAFF IN PRESCHOOL AGE GROUPS IN REGULATED CHILD CARE



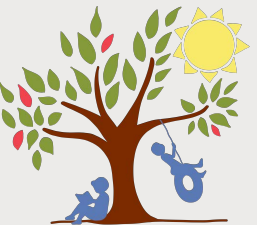
a Two of three staff must hold qualifications for groups of 24; one of two must hold qualifications for groups of 16.

b Two of three staff must hold qualifications for groups of 9-12 children in centres serving children from 0 to <36 months; one of two staff must hold qualifications in centres serving children from 36 months to age 5.



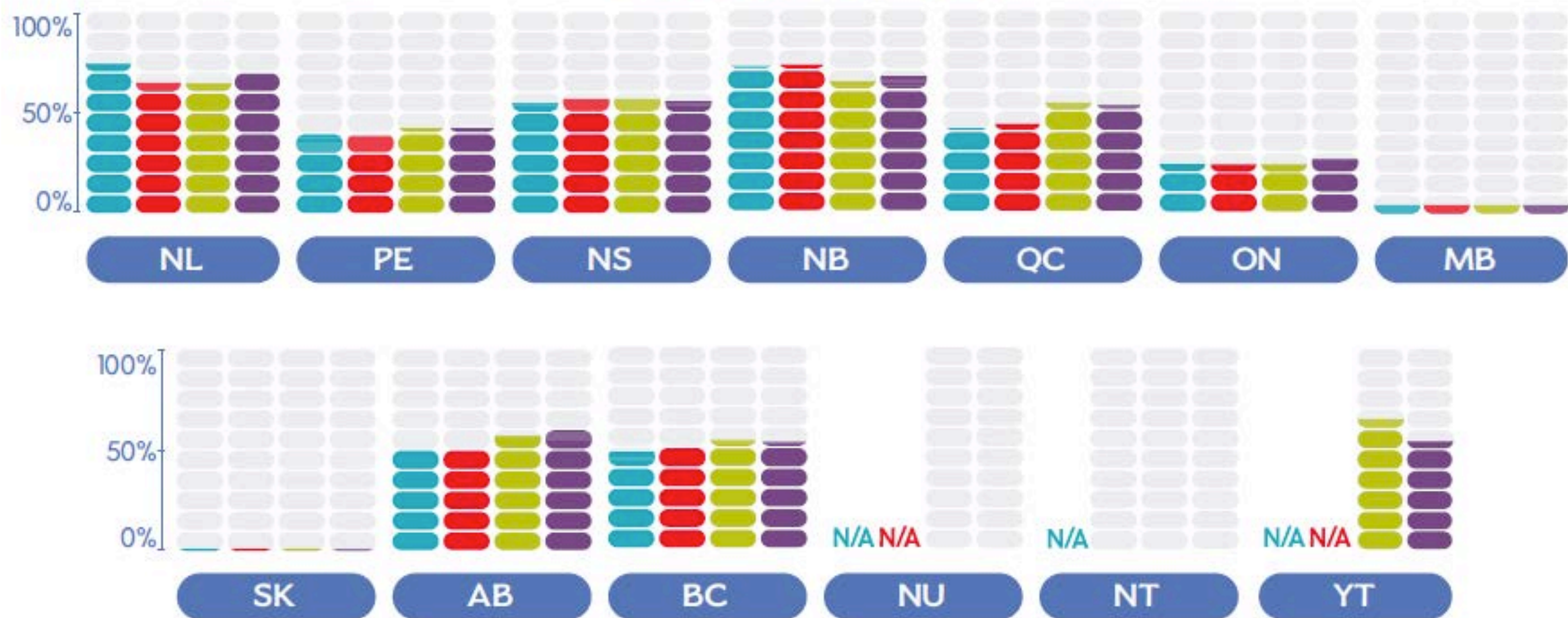


Auspice



PERCENT OF FOR-PROFIT VS NON-PROFIT CHILD CARE BY PROVINCE/TERRITORY (0 TO 12 YEARS OF AGE)

2011 • 2014 • 2017 • 2020



SK, NU, and NT do not fund for-profit child care programs. QC figures do not include school-aged child care.

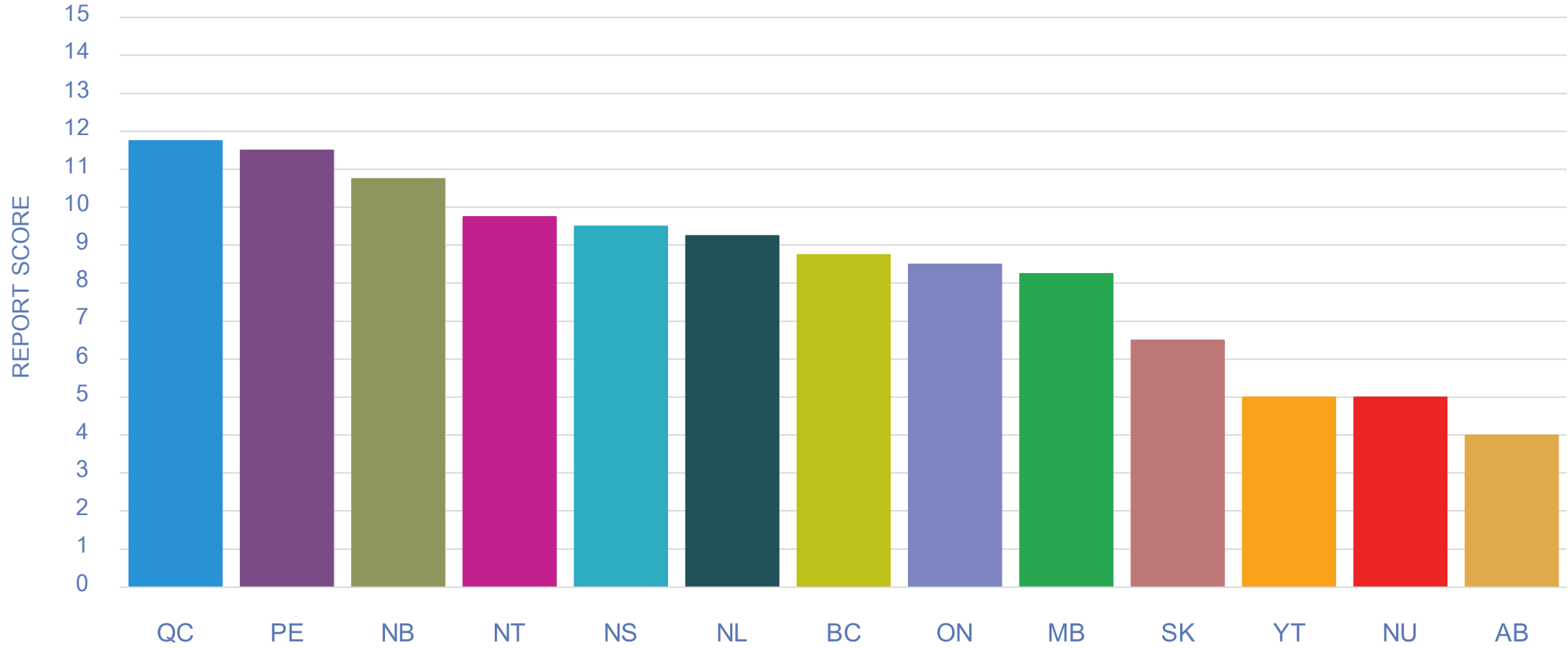
EARLY CHILDHOOD EDUCATION REPORT 2020

BENCHMARK		Pts	NL	PE	NS	NB	QC	ON	MB	SK	AB	BC	NU	NT	YT
GOVERNANCE	ECEC under common department/ministry	0.5	0.5	0.5	0.5	0.5	x	0.5	x	0.5	x	x	0.5	0.5	x
	ECEC supervisory unit	0.5	0.5	0.5	0.5	0.5	x	0.5	x	0.5	x	x	x	0.5	x
	Common ECEC policy framework	1	1	1	1	1	1	x	1	x	x	1	x	1	1
	Common local authority for ECE administration and delivery	1	x	x	x	1	x	1	x	x	x	x	1	x	x
FUNDING	At least 2/3 of child care funding goes to program operations	1	1	1	1	x	1	x	1	1	x	1	1	1	1
	Managed salary and fee scale in licensed child care	1	1	1 ^a	x	1 ^d	1 ^e	x	1 ^h	x	x	x	x	x	x
	At least 3% of overall budget devoted to ECEC	1	x	x	x	x	1	1	x	x	x	x	x	x	x
ACCESS	Full day Kindergarten	1	1	1	1	1	1	1	x	x	x	1	1	1	1
	50% of 2-4-year-olds regularly attend an ECEC program	1	x	1	1	1	1	x	x	x	x	1	x	1	x
	Funding conditional on including children with special needs in regulated child care	1	x	1 ^a	x	x	x	x	1	x	1	x	x	x	x
LEARNING ENVIRONMENT	ECEC curriculum framework in regulated child care	0.25	0.25	0.25	0.25	0.25	0.25	0.25	0.25	0.25	0.25	0.25	0.25	0.25	0.25
	ECEC curriculum framework use is mandatory in regulated child care	0.25	x	0.25 ^a	0.25 ^b	0.25 ^d	0.25	0.25	0.25 ⁱ	x	x	x	x	0.25	x
	Alignment of ECEC curriculum with Kindergarten	0.5	0.5	0.5	0.5	0.5	0.5	0.5	0.5	0.5	0.5	0.5	0.5	0.5	0.5
	At least 2/3 of staff in regulated child care for 2-4-year-olds are qualified	0.5	x	0.5 ^a	0.5	x	0.5 ^e	0.5	0.5	x	x	0.5	x	x	x
	Kindergarten educators require ECE qualifications	0.5	x	0.5	0.5 ^e	0.5	0.5	0.5 ^g	0.5 ^j	0.5 ^k	x	x	0.5 ⁱ	0.5 ^j	x
	Salaries of ECEs at least 2/3 of teachers	0.5	x	x	x	x	0.5	x	x	x	x	x	x	x	x
	ECE professional certification required	0.25	0.25	0.25	0.25	x	x	0.25	0.25	0.25	0.25	0.25	x	x	0.25
	ECE professional development required	0.25	0.25	0.25	0.25	0.25	0.25	0.25	x	x	x	0.25	0.25	0.25	x
ACCOUNTABILITY	Annual progress reports	1	1	1	1	1	1 ^f	1	1	1	1	1	x	1	x
	Standards for ECEC programs include Kindergarten	1	1	x	x	1	1	x	x	1	1 ⁱ	1	x	1	x
	Population measures for preschool collected and reported	1	1	1	1	1	1	1	1	1	x	1	N/A ^m	1	1
TOTAL		15	9.25	11.5	9.5	10.75	11.75	8.5	8.25	6.5	4	8.75	5	9.75	5
		Pts	NL	PE	NS	NB	QC	ON	MB	SK	AB	BC	NU	NT	YT

^a In Early Years Centres only. ^b In Pre-Primary and child care centres that receive public funding. ^c In Pre-Primary only. ^d In Designated Early Learning Centres only. ^e In Centres de la petite enfance only. ^f QC not a signatory to F/P/T social agreements. ^g ECEs team-teach with Ontario Certified Teachers. ^h Regulated fees, wage floor. ⁱ All programs develop a curriculum statement based on the provincial framework. ^j Kindergarten staffed by teacher or ECE. ^k Prekindergarten teacher and ECE associate work as a team in PreK. ^l In Early Childhood Services only. ^m Not applicable due to data suppression.



EARLY EDUCATION REPORT 2020



Early Childhood Education in Canada

Recommendations



Legislation



Regulations and Standards



Curriculum



Professional Development / Training



Assessment and Monitoring

- All jurisdiction should have developed policy frameworks
- Reverse trends to reduce need for ECE qualifications and reduce reliance on home care to accommodate expansion
- Standardize curriculum across ECEC settings
- Ensure minimum training for all staff working with children
- Adhere to ELCC agreement reporting requirements at a minimum

'Educating Down' – The Role of School Boards

Moving Forward

LOOKING AHEAD

MANY JURISDICTIONS HAVE CHOSEN SCHOOLS AS THEIR BASE FOR PRESCHOL



01

Quebec committed to universal Full Day Pre-K by 2023



02

Yukon Full Day Pre-K in September 2021



03

Newfoundland and PEI 4-year-old Pre-K



04

Nunavut piloting FDK

Yukon Territory New Leader in Early Learning

Road to Universal Access

4 Moved oversight to Education Ministry



5 Introducing new curriculum and monitoring.



3 Increased funding for inclusion



2 Parent fees reduced by \$700/month



1 \$17.11 wage top up for ECEs

